

April Fools' Day Puzzles

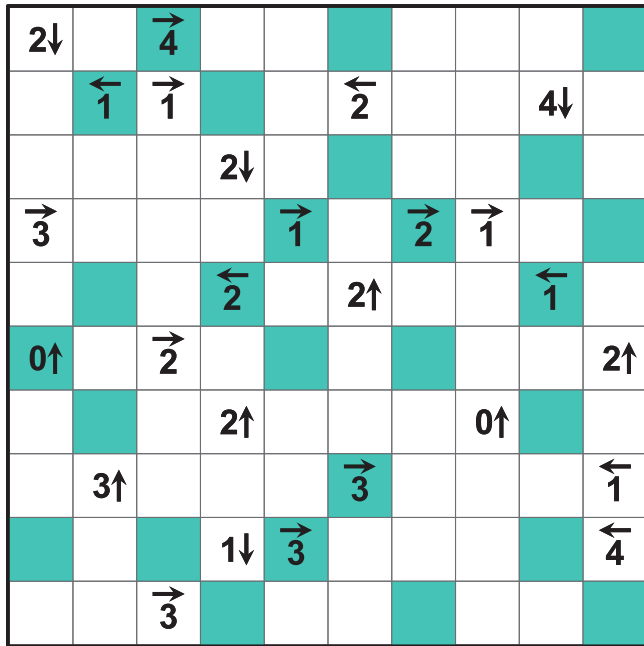
4/1/22

SOLUTION

©2022 Cathy Saxton
idleloop.com/puzzles

Use the clues to solve these puzzles, but—April Fools!—some of the clues aren't true!

Yajisan-Kazusan



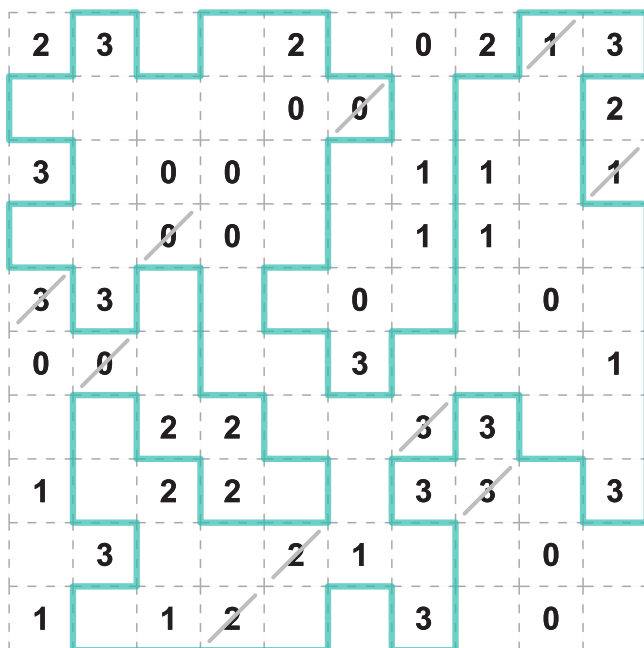
Shade some of the cells in this grid. Shaded cells may not share an edge.

All of the unshaded cells (with and without numbers) must form a single region connected along edges.

Numbers with arrows specify how many shaded cells lie in the indicated direction.

But, some of the numbers are liars! All cells with false numbers must be shaded. All unshaded cells must be true. (Shaded cells may contain numbers that are true.)

Liar Slitherlink



Draw lines along gridlines to form a single loop.

Numbers specify how many of that cell's edges are on the loop.

But, some of the numbers are liars! Exactly one value in each row and column is false and its cell must *not* have that number of edges on the loop.