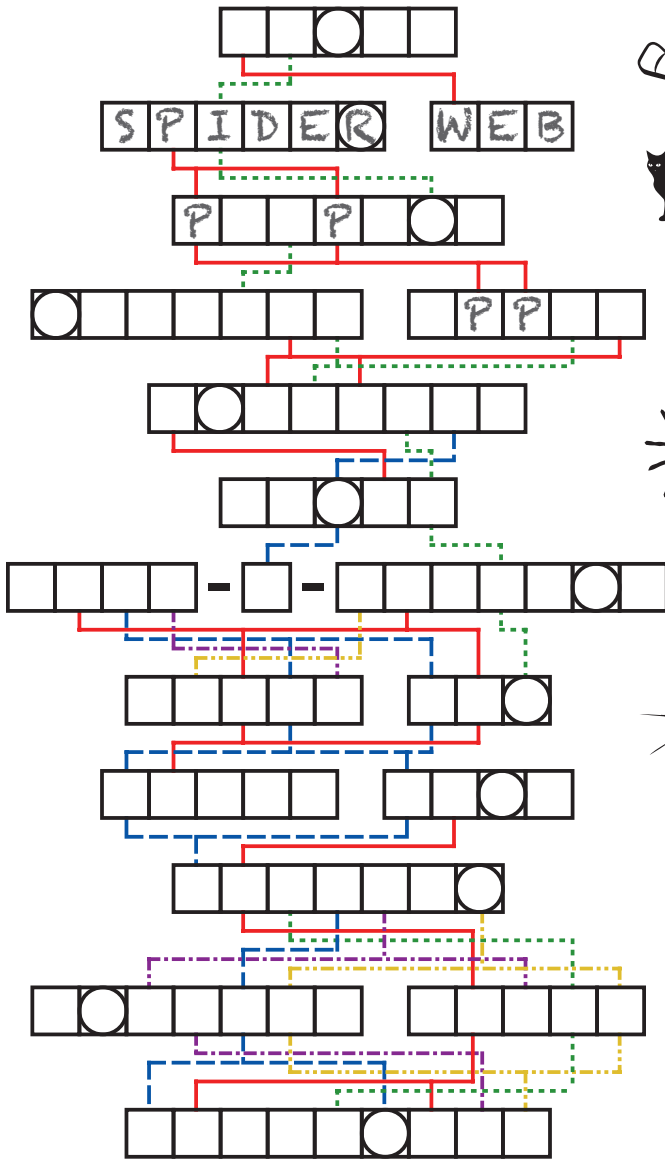


HALLOWEEN PUZZLES

Fill in the “word chain” below with things you might see at Halloween. Boxes that are connected with lines contain the same letter. One answer is given and a few chained letters are shown as examples.

When you are done, read the circled letters (from top to bottom) to spell a thematic message.



Plot your course through the neighborhood (the grid) to collect candy on Halloween.

The goal of this puzzle is to draw a single path that travels through empty squares and returns back to its starting point (forming a loop). You may travel horizontally or vertically – but not diagonally – and you may not return to a square you’ve already visited.

All empty squares that you don’t visit must be shaded. No two shaded squares may share an edge (but they can touch at the corners).

The numbered squares specify how many shaded squares appear between that location and the edge of the grid in the indicated direction. Some shaded squares won’t have any numbers pointing to them.

Example:

